



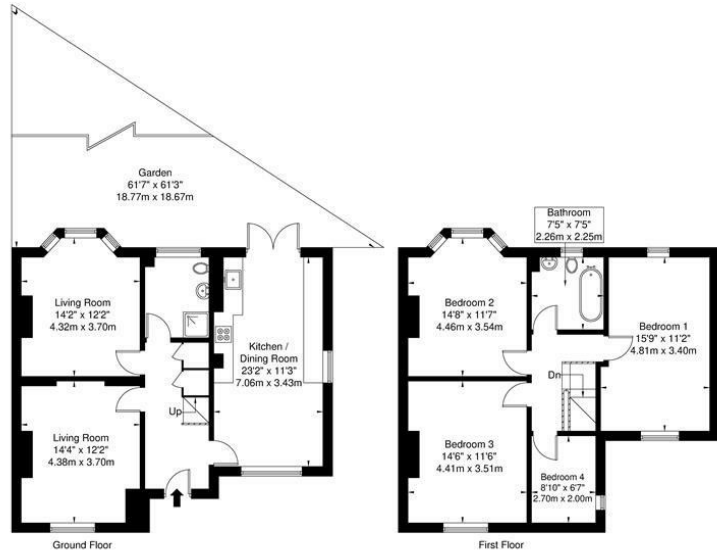
Abbotts Drive, Wembley, HA0 3SH
Asking Price £780,000

4 2 3 D

Floor Plan

Abbotts Drive, Wembley HA0 3SH

Approx. Gross Internal Area = 138.1 sq m / 1486 sq ft



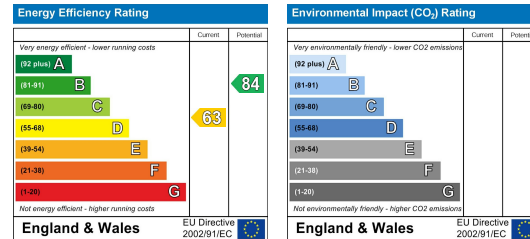
Ref

Copyright THEBLEUPLAN

Disclaimer : Floor plan measurements are approximate and are for illustrative purposes only. While we do not doubt the floor plan accuracy and completeness, you or your advisors should conduct a careful, independent investigation of the property in respect of monetary valuation.

- SUDBURY COURT ESTATE
- FOUR BEDROOM
- SEMI DETACHED
- TWO BATHROOMS
- EXTENDED KITCHEN 23'2 x 11'3
- EXCPTIONAL CONDITION THROUGHOUT
- OFF STREET PARKING FOR MULTIPLE CARS
- CATCHEMENT & WALKING DISTANCE TO WEMBLEY HIGH & BYRON COURT PRIMARY SCHOOLS
- 8 MINS WALKING DISTANCE TO STATION
- VIEWINGS STRONGLY RECOMMENDED & STRICTLY BY APPOINTMENT ONLY

Energy Efficiency Graph



These particulars, whilst believed to be accurate are set out as a general outline only for guidance and do not constitute any part of an offer or contract. Intending purchasers should not rely on them as statements of representation of fact, but must satisfy themselves by inspection or otherwise as to their accuracy. No person in this firm's employment has the authority to make or give any representation or warranty in respect of the property.

Sudbury

35 Court Parade, Sudbury
Middlesex HA0 3HS

Sales 020 8904 4888
Lettings 020 8452 7999
E sudbury@danielsestateagents.co.uk

Wembley

438 High Road, Wembley
Middlesex HA9 6AH

Sales 020 8900 2811
Lettings 020 8452 7999
E wembley@danielsestateagents.co.uk

Neasden

352 Neasden Lane, Neasden
London NW10 0AD

Sales 020 8452 7000
Lettings 020 8452 7999
E neasden@danielsestateagents.co.uk

Willesden Green

33 Walm Lane, Willesden Green
London NW2 5SH

Sales 020 8452 7000
Lettings 020 8452 7999
E willesdengreen@danielsestateagents.co.uk

Kensal Rise

77 Chamberlayne Road, Kensal Rise
London NW10 3ND

Sales 020 8969 5999
Lettings 020 8969 5999
E kensalrise@danielsestateagents.co.uk